

**Chart A: Combined Organizational
Chart
Administration**

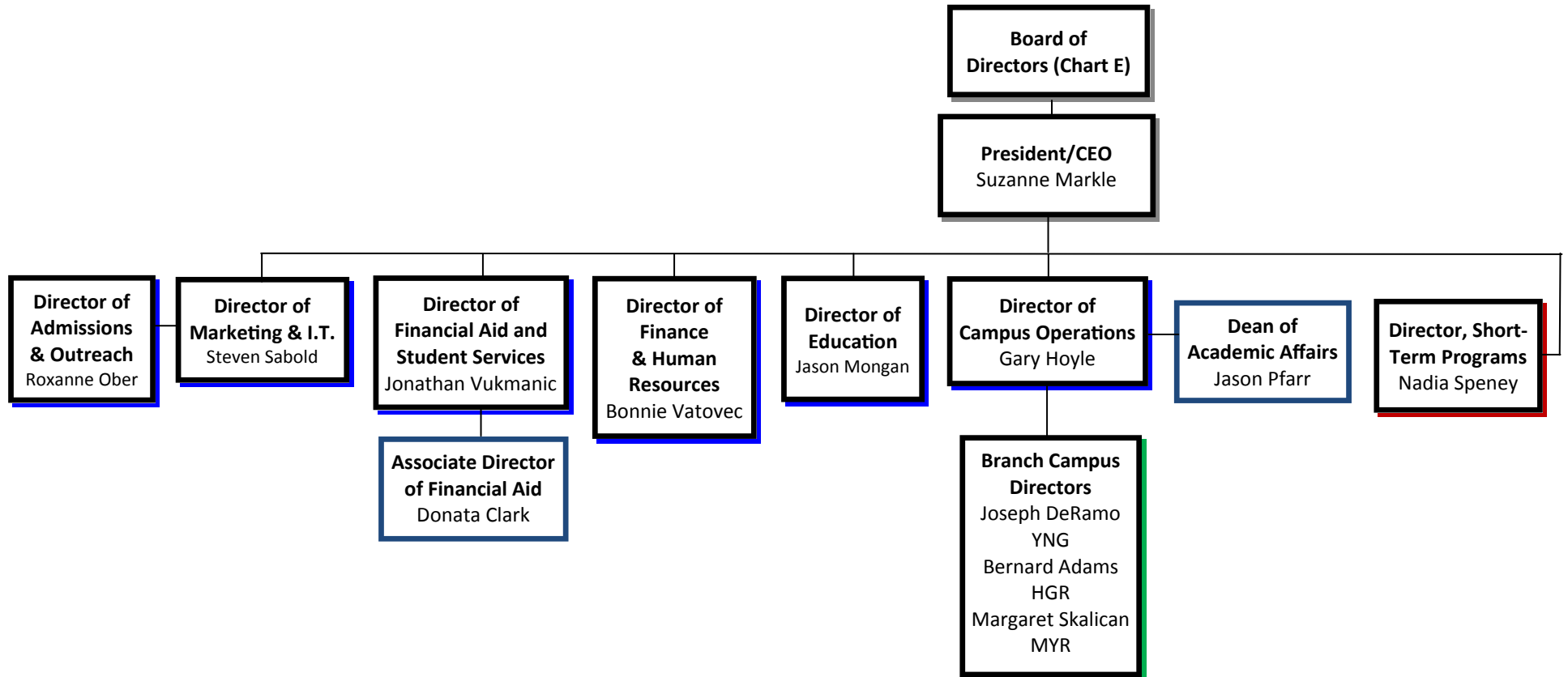


Chart B: PIA School of Specialized Technology
(Aviation and Degree Programs)

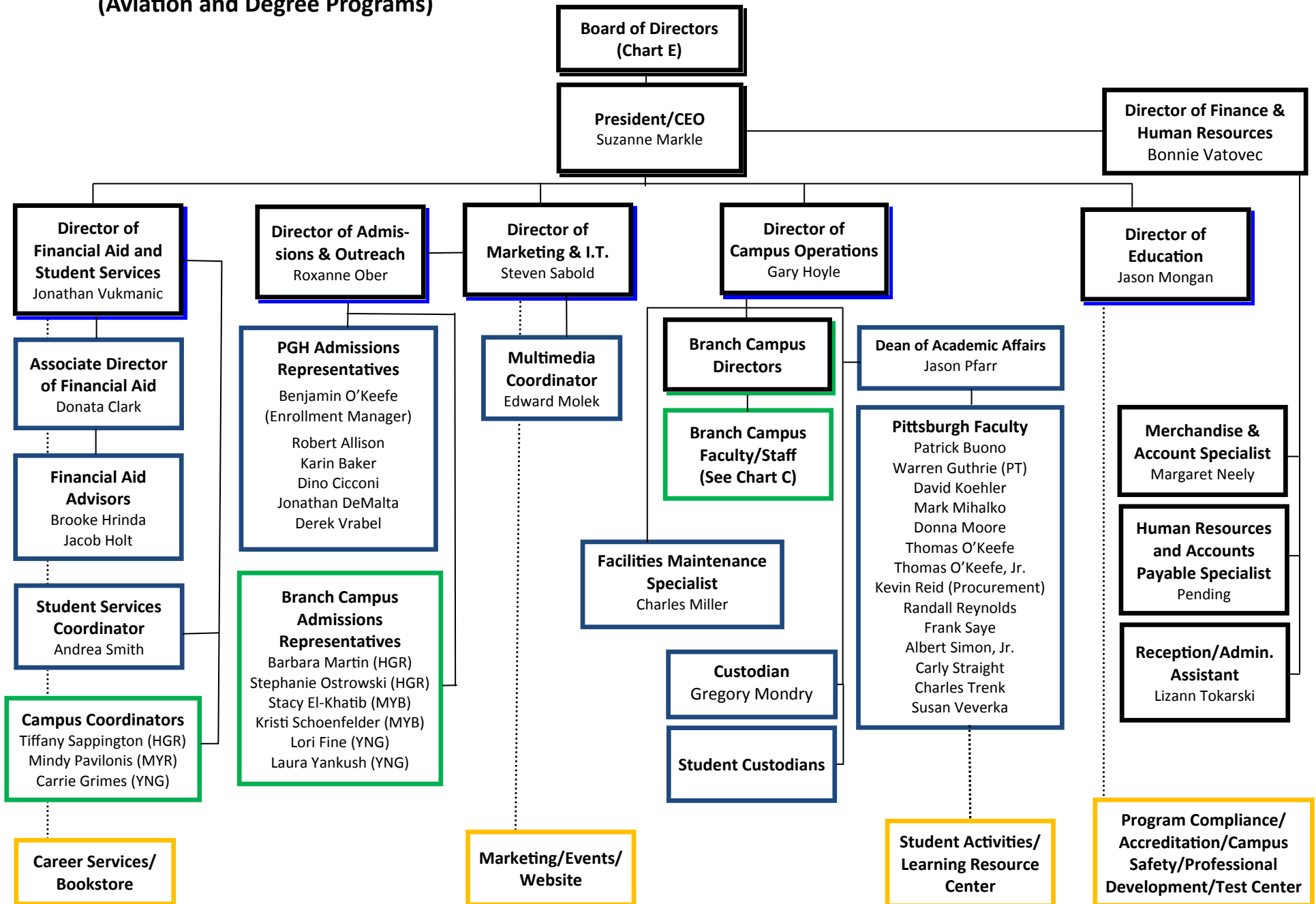
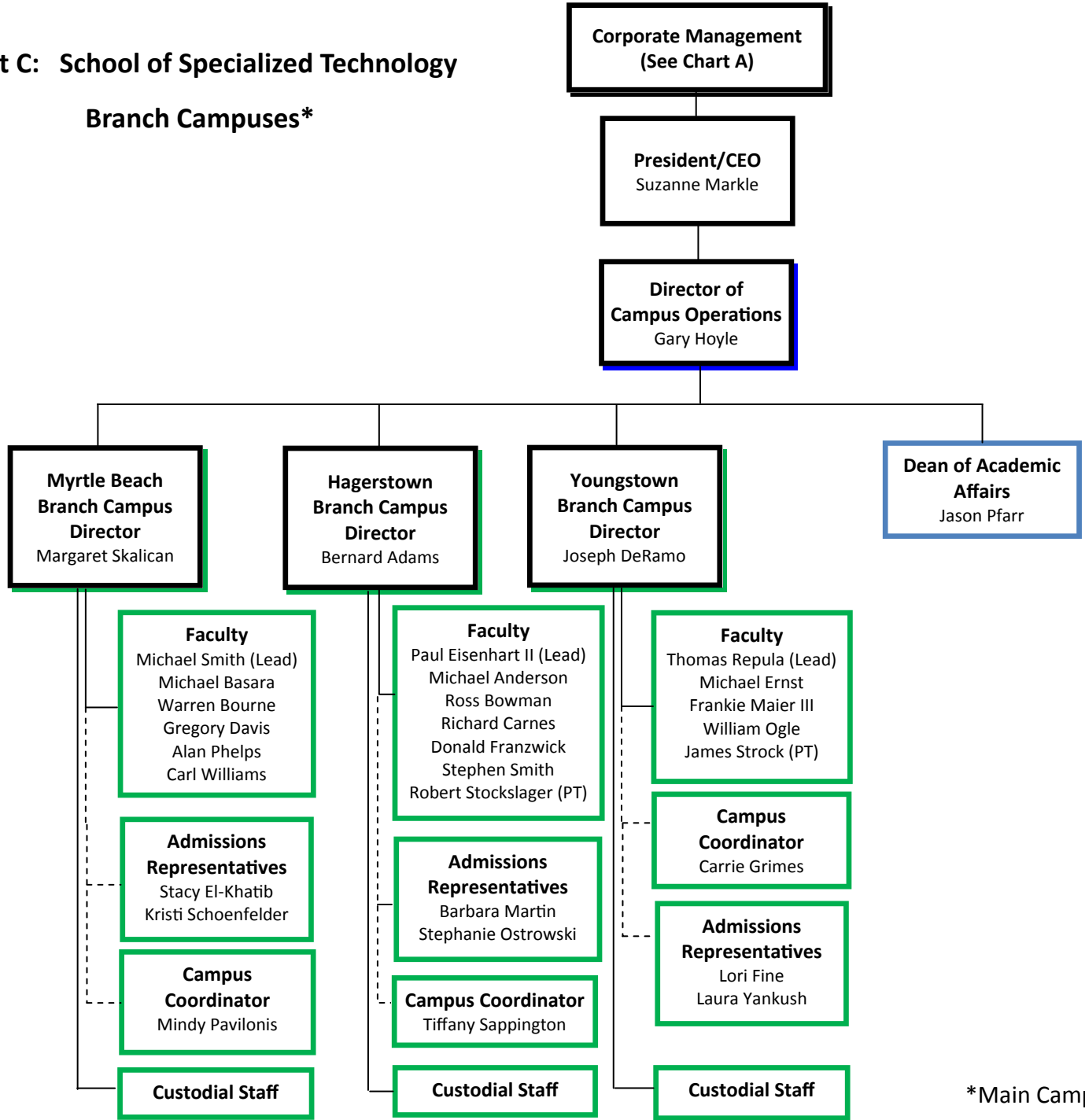


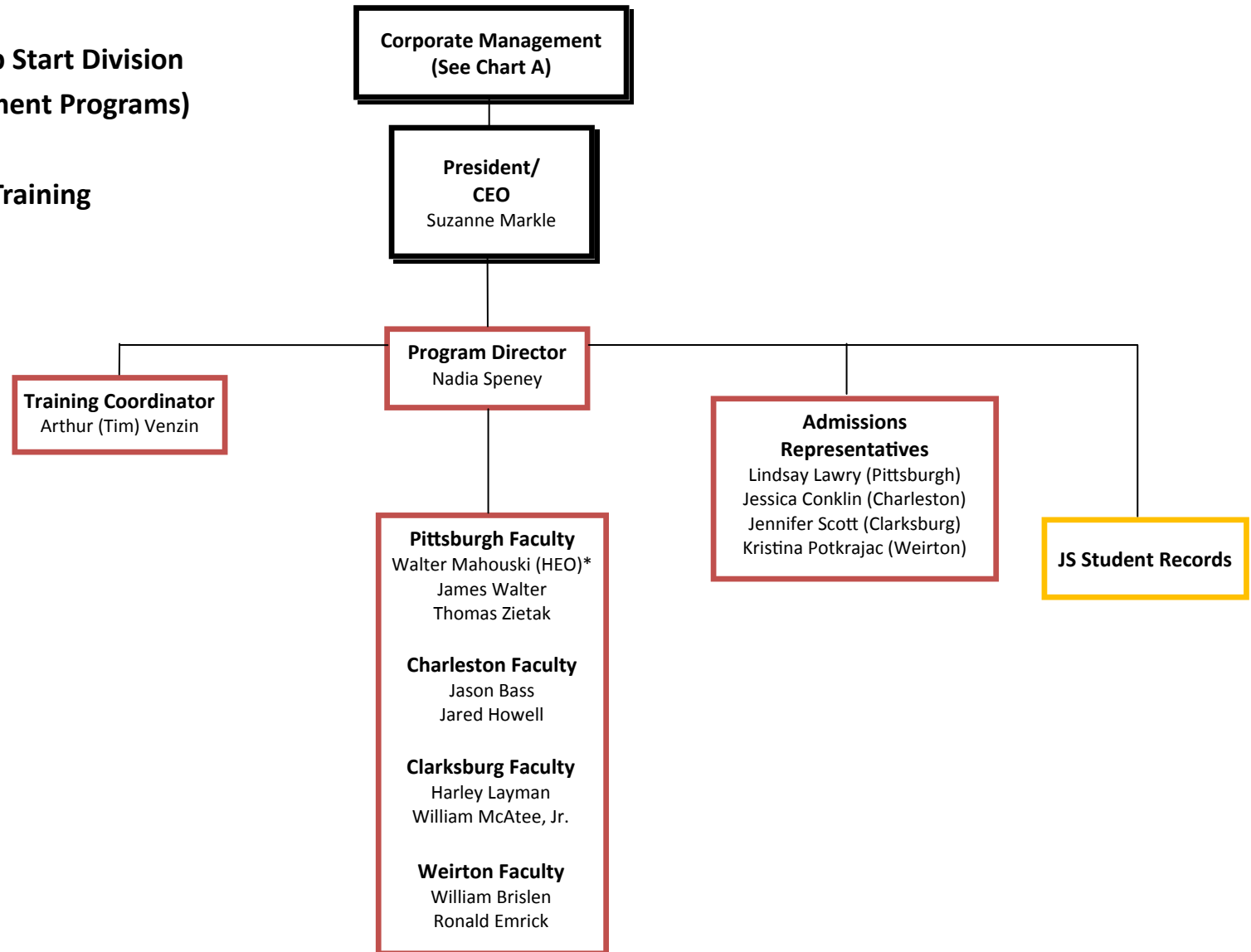
Chart C: School of Specialized Technology

Branch Campuses*



*Main Campus is reflected on Chart B

**Chart D: PIA Jump Start Division
(CDL/Heavy Equipment Programs)
and
Corporate Training**



*HEO— Heavy Equipment Operator Program

Chart E: PIA Board of Directors

Pittsburgh Institute of Aeronautics
Board of Directors

Internal Board Members/Officers

- Suzanne Markle**
President
Chief Executive Officer
- Jana Graham**
Chairperson
- Bonnie Vatovec**
Secretary and Treasurer

Independent Board Members

- Robert Bootay, Esq.**
General Counsel for PIA,
Owner, Bootay, Bevington,
& Nichols LLC,
All Pittsburgh Real Estate
- Richard Kelly**
Commercial Pilot,
Director, Butler Co. Airport
- Joseph Maola, PhD**
Licensed Professional Counselor
Faculty, Duquesne University (ret.)
- Scott Johnson**
Business/Finance Professional
- Cynda Wilmesher**
Marketing/Real Estate Professional