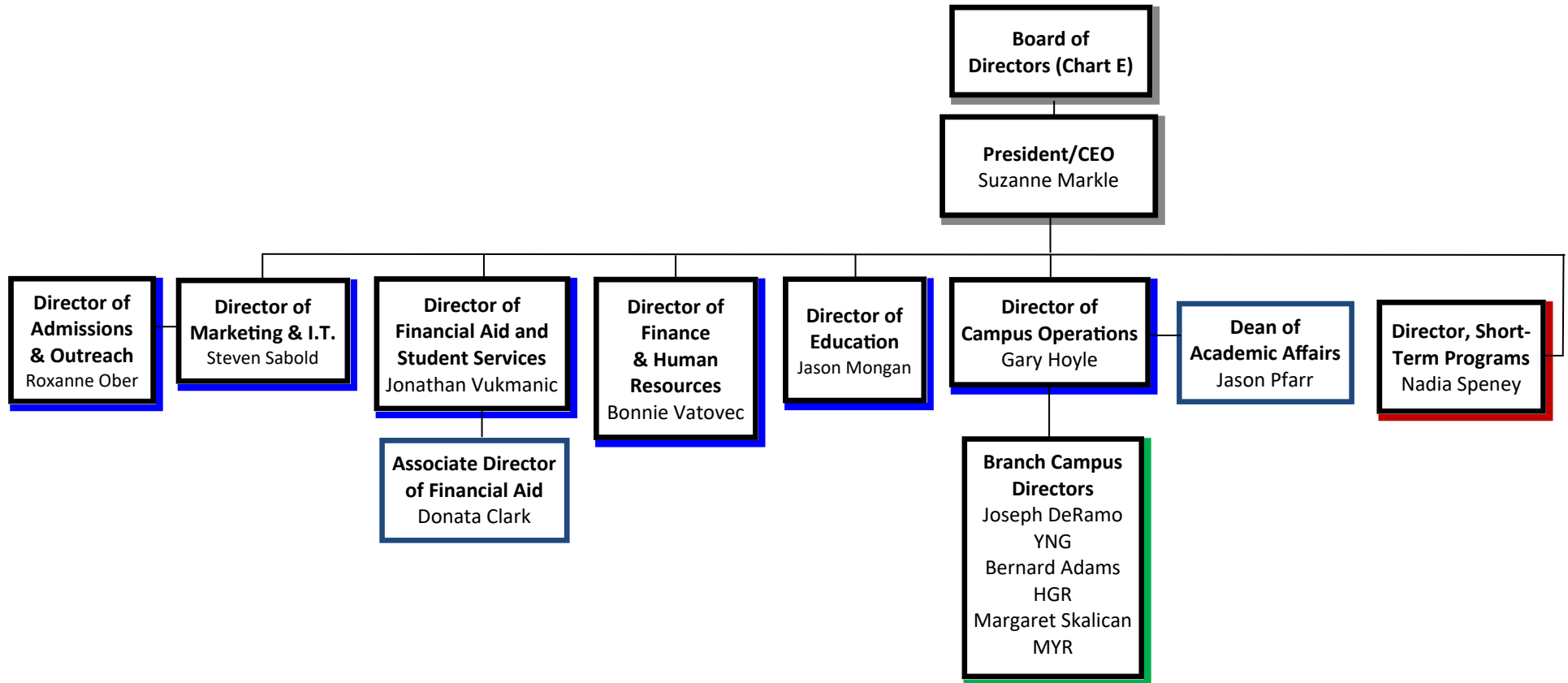
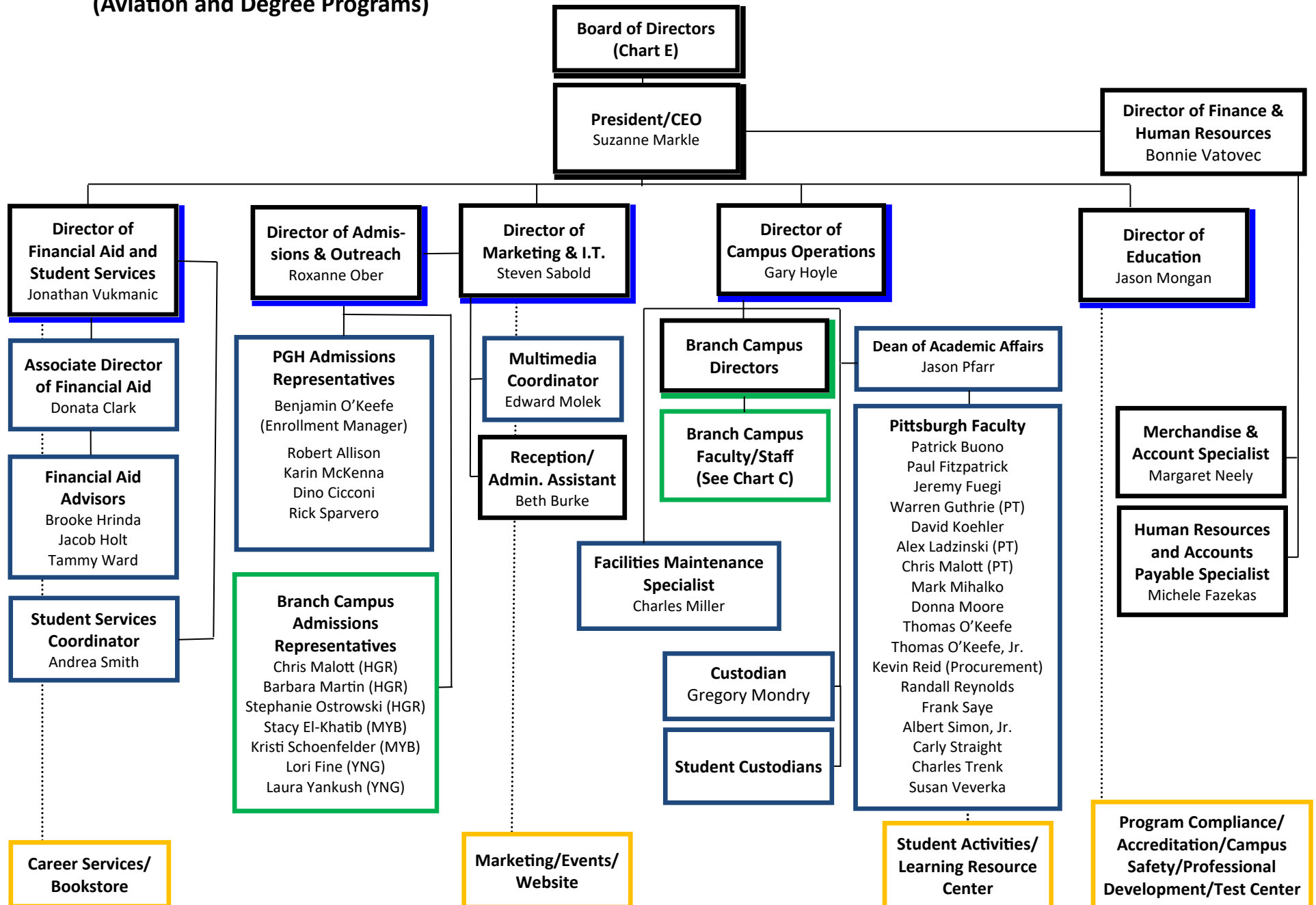


**Chart A: Combined Organizational  
Chart  
Administration**

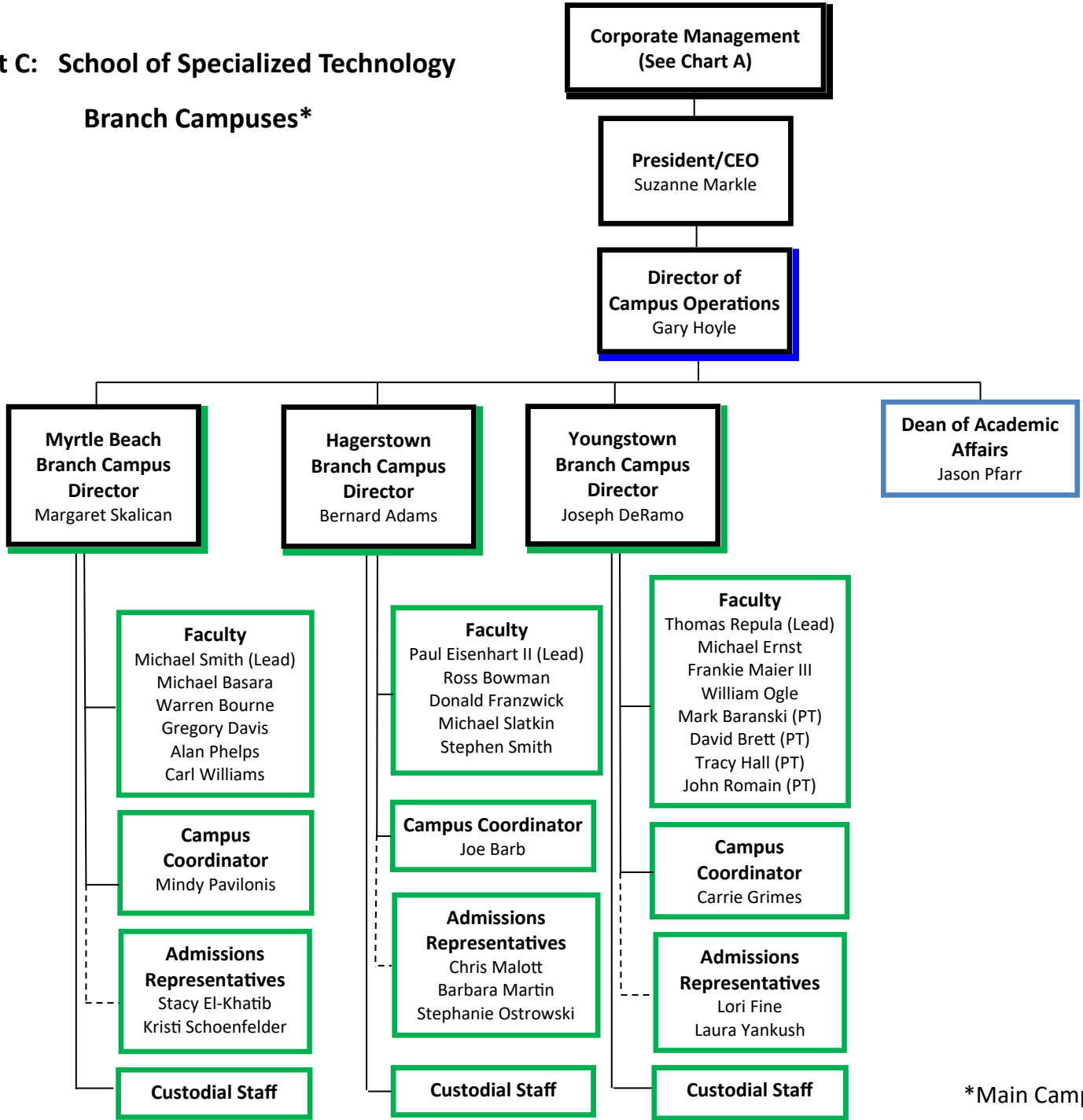


**Chart B: PIA School of Specialized Technology**  
**(Aviation and Degree Programs)**



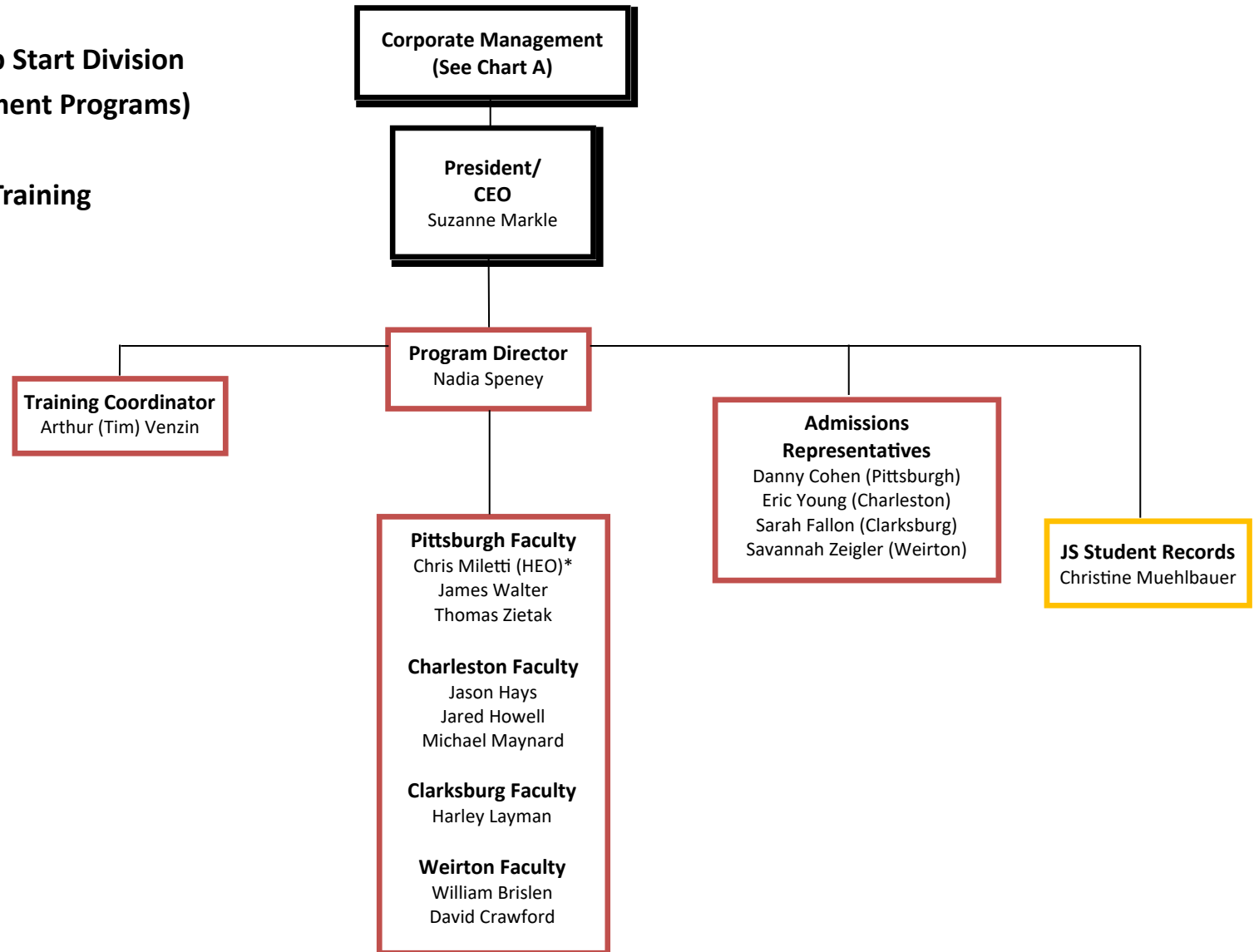
**Chart C: School of Specialized Technology**

**Branch Campuses\***



\*Main Campus is reflected on Chart B

**Chart D: PIA Jump Start Division  
(CDL/Heavy Equipment Programs)  
and  
Corporate Training**



\*HEO— Heavy Equipment Operator Program

Chart E: PIA Board of Directors

Pittsburgh Institute of Aeronautics  
Board of Directors

Internal Board Members/Officers

- Suzanne Markle**  
President  
Chief Executive Officer
- Jana Graham**  
Chairperson
- Bonnie Vatovec**  
Secretary and Treasurer

Independent Board Members

- Robert Bootay, Esq.**  
General Counsel for PIA,  
Owner, Bootay, Bevington,  
& Nichols LLC,  
All Pittsburgh Real Estate
- Richard Kelly**  
Commercial Pilot,  
Director, Butler Co. Airport
- Joseph Maola, PhD**  
Licensed Professional Counselor  
Faculty, Duquesne University (ret.)
- Scott Johnson**  
Business/Finance Professional
- Cynda Wilmesher**  
Marketing/Real Estate Professional